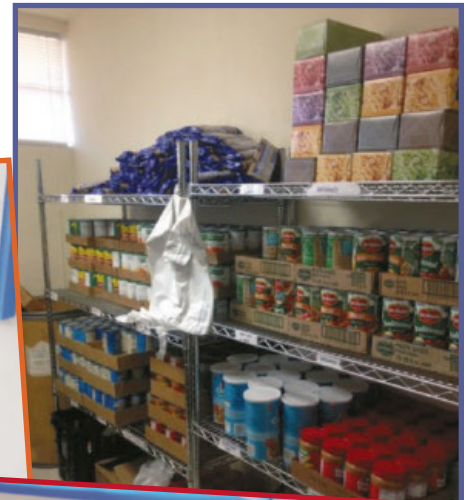


Important Update: Beta Food Security Location at Purpose Church Has Closed

After more than a decade of serving the Pomona community, our Beta Food Security Program Center at Purpose Church has officially closed. Our last day of service was April 24th. We are deeply grateful to Purpose Church for their longstanding partnership and unwavering support throughout the years. We will never forget how the congregation so graciously stepped up to host our pantry at their facility when we had to leave our previous location in 2012. Together, our Beta Center provided **76,690 individuals** with some **1,150,350 meals** over the course of our partnership. The Beta Center also hosted Thanksgiving dinners, volunteer work parties, and many holiday meal, back-to-school supply, and Santa toy giveaway events. The generosity of Purpose Church has helped us make a meaningful impact in the lives of so many, and they will continue to host our weekly Farmers' Market each Saturday morning. **Thank you!**

While Beta's chapter at Purpose Church has come to a close, Hope Partners remains committed to continuing our mission to feed the hungry in Pomona. Plans are underway behind the scenes to re-open the Beta Center at a new location in Pomona. We're excited about what's ahead and look forward to sharing more details as soon as we are able. In the meantime, Pomona clients can avail themselves of our food assistance at our pantries in Claremont, San Dimas, and Ontario.

Thank you to all who have supported the Beta Center over the years. Your continued support means the world to us as we take this next step!



Clockwise from top right: Beta's shelves stocked with supplies for distribution to families struggling with food insecurity; friends of Inland Valley Hope Partners gathered for a ribbon-cutting event for the Beta Center in March 2013; families received backpacks and school supplies as part of a giveaway event in 2015; volunteers paint the Beta lobby walls as part of Pomona Beautification Day in 2014.

Calendar of Events/ Activities

Farmers' Market.....Every Saturday
Newsletter Mailing.....June 17, 2025
Annual Meeting.....June 25, 2025
Newsletter Mailing.....July 15, 2025

Call or email office for bold events (need volunteers)!
 909-622-3806, x108;
vcoordinator@inlandvalleyhopepartners.org
www.inlandvalleyhopepartners.org

**INLAND VALLEY
HOPE PARTNERS**

BOARD OF DIRECTORS

Board Chair
Ron Bolding
Pilgrim Place

Board Vice Chair
Dr. Donna Bernard
*Retired School
Superintendent*

Treasurer
Rosario Ulloa
Pacific Premier Bank

Secretary
Judith B. Mussatto, OFS
Retired Bookkeeper

Members
Peggy Constantine
Retired Educator

Gabriel DeLuna
Trilogy Financial

Jamie Gibson
JAAG Financial Services

Dr. Massie Hazegh
State Farm

Dain Pankratz
Boyd Caton Group

Ehmandah Ramsey
She Stories

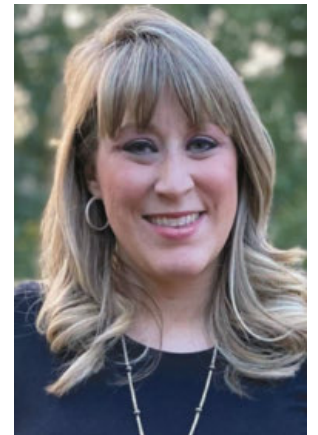


Who We Are ...

Celebrating over 50 years of commitment, Inland Valley Hope Partners serves over 75,000 men, women and children each year through "Our House" family residential shelter; and Rapid Re-Housing; SOVA, Claremont and San Dimas food pantries; and the Pomona Farmers' Market throughout 13 communities including Chino, Chino Hills, Claremont, Diamond Bar, La Verne, Montclair, Mt. Baldy, Ontario, Pomona, Rancho Cucamonga, San Dimas, Upland, and Walnut. The shelter houses five families for up to 90 days. The food pantries distribute five days worth of food per person to no and low income families. Clients may come once every 30 days. The Farmers Market operates every Saturday morning and accepts WIC and EBT cards. Begun in 1968 as the Pomona Council of Churches, today the non-profit is a collaboration of faith communities, businesses, community groups, and individuals who care about their neighbors.

Blessings ...

The printing of this newsletter is happening nearly in tandem with our agency's 28th Annual Golf Classic at the beautiful Sierra Lakes Golf Course in Fontana. We are so thankful to our partners who sponsor, volunteer, and play in this fundraising event each year. Although we won't be doing our full event recap until next month, I thought it fitting to highlight a few of our higher-level donors now. I'd like to recognize:



Sheltering the Homeless Sponsor Cheeryble Foundation
(in memory of Tim Constantine)

Healthy Living Sponsor Pacific Premier Bank

Hope Partners Sponsors Acts Thrift Store
Life Bible Fellowship Church
Mark Ramsey/ Bank of America
Visser-Engelsma Consulting
Scott Williams

Foursome Sponsors Claremont Rotary/Tom Shelley
Lucky Ladies
Thomas Graham
MaryAnn Kenney Foundation
Ted and Carol Powl

And, of course, thank you to all the hole and tee sign sponsors, and donors to the auction/raffle. We will have a full list of supporters in the June newsletter.

Blessings!

Kami Grosvenor

President/CEO



**INLAND VALLEY
HOPE PARTNERS**
1753 N. Park Avenue,
Pomona, Ca 91768
909.622.3806
FAX 909.622.0484
info@inlandvalleyhopepartners.org
www.InlandValleyHopePartners.org

ADMINISTRATION/HOUSING
OFFICE HOURS:
Monday - Thursday 8:00 am-6:00

Saying Goodbye...

Our Fiscal Assistant, Bryce Gardner, will be leaving us this summer. Bryce has been a valued member of our team for 2½ years, faithfully entering your generous donations and ensuring our bills are paid on time. He is now preparing to continue his higher education out of state—(what a commute that would be!). We are grateful for the time he spent with us and send him off with our heartfelt thanks and best wishes.

As a result, the fiscal team is beginning the search for his replacement. If you or someone you know is seeking a permanent, part-time position—four afternoons a week (Monday–Thursday)—at minimum wage, focused on data entry and financial tasks, please contact Office/Fiscal Administrator Yvonne West at 909-622-3806, x102, or email her at yvonnew@inlandvalleyhopepartners.org.

We are first reaching out to our Hope Partners family and have chosen, for now, not to advertise this position to the general public. Thank you for your consideration!

Hope Partners Receives \$2,500 Donation from Stater Bros. Charities



In celebration of the grand reopening of the newly renovated Stater Bros. Markets Vineyard location in Ontario, Stater Bros. Charities invited Store Manager Jaime to nominate a local nonprofit making a positive impact in the community. We are honored that

Jaime selected Hope Partners' Sova Program Center as the recipient of a \$2,500 donation to support our hunger relief efforts. The check was presented to our President/CEO Kami Grosvenor at a brief check presentation at the store on May 7th.

This generous gift will go a long way in helping us provide food and essential resources to local families in need. We are deeply grateful to Stater Bros. Charities and the Vineyard store team for recognizing the importance of our mission and choosing to support our work.

Eggs-tra Special Thanks to Bank of America

We would like to extend our sincere thanks to the local Bank of America branches for once again supporting Inland Valley Hope Partners with their generous donation of 65 Easter baskets this year.

These festive baskets were shared with children at our family shelter, in our RRH program and through our local food pantries, bringing smiles and a touch of holiday cheer to families who need it most. We're grateful for Bank of America's continued partnership and their commitment to supporting our community.

Thank you for helping make Easter special for the families we serve!



INLAND VALLEY HOPE PARTNERS

STAFF

President/CEO

Kami Grosvenor, x101

[kamig@](mailto:kamig@inlandvalleyhopepartners.org)

inlandvalleyhopepartners.org

Office/Fiscal Administrator

Yvonne West, x102

[yvonnew@](mailto:yvonnew@inlandvalleyhopepartners.org)

inlandvalleyhopepartners.org

Fiscal/Grants Administration Assistant

Bryce Gardner, x112

[bryceg@](mailto:bryceg@inlandvalleyhopepartners.org)

inlandvalleyhopepartners.org

Development & Communication Coordinator

Development & Volunteer Relations Associate

Grant Writer

Kay Brand, x104

[kayb@](mailto:kayb@inlandvalleyhopepartners.org)

inlandvalleyhopepartners.org

Case Manager

Karen Abram, x106

[karena@](mailto:karena@inlandvalleyhopepartners.org)

inlandvalleyhopepartners.org

Emergency Housing Coordinator/ Food Program Associate

Claudia Wheetley, x107

[claudian@](mailto:claudian@inlandvalleyhopepartners.org)

inlandvalleyhopepartners.org

Food Security Program Manager

Isaac Vega, x201

[isaacv@](mailto:isaacv@inlandvalleyhopepartners.org)

inlandvalleyhopepartners.org

Case Manager

Kristina Alvarez, x204

[kristinaa@](mailto:kristinaa@inlandvalleyhopepartners.org)

inlandvalleyhopepartners.org

Farmers' Market Manager (contract)

Harry Brown-Hiegel,
310-621-0336

h.brownhiegel@ca.rr.com

Support Hope Partners Through a Monthly Gift

When you commit to a monthly gift, you commit to making a lasting difference in the lives of our neighbors in need. Your monthly donation provides Hope Partners with a consistent, reliable funding source, allowing us to take a planned, long-term approach to help our community's hungry and homeless children and families.

It's so easy to become a monthly donor! Just go to the donation page on our website (www.inlandvalleyhopepartners.org) and select "monthly" under the recurring donation option near the top of the form. Or give us a call, and we will enroll you in our monthly giving program! Your donation will automatically be deducted from your credit card or checking account each month.

Become a monthly donor today and know that your donation impacts the lives of children and families in need today and throughout the year!

For more information, contact Kami Grosvenor at 909-622-3806, x101 or kamig@inlandvalleyhopepartners.org.



“Our House” Housing Program Success Story



For Miranda*, a single mother with a beautiful 11-year-old daughter, life had become an overwhelming struggle. Living with a serious health condition, little family support, and the demands of caring for a child with special needs, she spent the last two years in homelessness, uncertain where to turn for help.

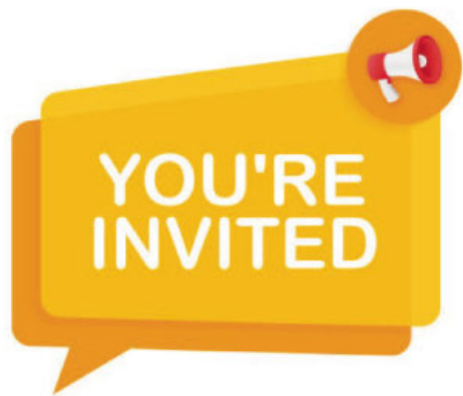
The weight of trying to care for her daughter’s unique needs while battling her own physical and emotional hardships often left Miranda feeling isolated and hopeless.

After countless calls and dead ends, Miranda connected with the “Our House” Family Shelter Program—just when she needed it most. From that first intake interview, Miranda has begun to feel something shift. Through the support of Hope Partners’ comprehensive case management, therapeutic services, and life-building workshops, she has finally been able to share her story—and be met with compassion, structure, and real solutions. For the first time, she has felt she had a team who listened, understood her struggles, and helped her create a real plan forward.

With her daughter enrolled in a supportive home school program and a safe place to live, Miranda is starting the hard work to rebuild her life. She’s been securing the resources necessary to create a firm foundation for her and her daughter.

Thanks to her hard work, faith, and the assistance of Inland Valley Hope Partners and our partners, Miranda’s next chapter will be filled with stability, healing, and hope. We continue to wish her and her daughter all the best as they step into a bright future.

**Name changed*



to the Hope Partners Annual Meeting

Inland Valley Hope Partners warmly invites all of our supporters to attend our Annual Meeting on **Wednesday, June 25th at 4:00 p.m.** We'll be gathering in the Fellowship Hall at First Christian Church Pomona, located at 1751 N. Park Ave., Pomona.

This annual event provides the opportunity for our board, volunteers, and financial champions to come together as a community, reflect on the past year, and look ahead to what's next. During the meeting, we'll be electing new officers and members to our Board of Directors and sharing a State of the Agency update to highlight the impact your support has made possible.

Whether you're a long-time partner or a new friend, we welcome you to join us as we celebrate our progress and commitment to our mission of providing food, shelter, and supportive services to those in need.

Please RSVP to Kami Grosvenor at 909-622-3806, x101 or kamig@inlandvalleyhopepartners.org.

March & April Donors

Partners (\$1,000.00 to \$1,000,000.00)

Kenneth and Marian Brown
Claremont Presbyterian Church
Claremont United Church of Christ, Congregational
Compassion Church of the Foothills
Life Bible Fellowship Church
CrossPoint Christian Reformed Church
Thomas Graham
Richard & Joke H. Johnson
Anonymous
La Verne Church of Brethren
Todd and Karen Logue
Christine Moore
Morgan Stanley Gift Fund
Theodore and Carol Powl
Louis & Joy Shaup
Tom Shelley - Claremont Rotary
The Cheeryble Foundation
John R. Townswick
Scott Williams

Associates (\$500.00 to \$999.99)

Mark Bailey
Kathy A Beauchamp

James and Linda Bonn
Christian Community Foundation of Memphis and the Mid-South, Inc.
Margaret (Peggy) Constantine
Bruce and Laura Corigliano
Robert & Karen Dalton
Gerald & Berkley Davis
Michael & Emily Fay
Claudia Hemenway - Robert Bauer
Glenn and Sharon Hueckel
Life Bible Fellowship Church
Michael & Agnes McGaha
John and Mary
Ellen Montgomery
Dain Pankratz
Pomona Valley Hospital Medical Center
Jess & Marion Swick
Upland Christian Church
Ellen Low Webster

Pace Setters (\$250.00 to \$499.99)

Athaco, Inc.
Dr. Donna Bernard
Barbara Coates
Ben and Diane Cooley
Sharon Eazell
(continued on next page)

Other Ways to Give

Do you designate your **Ralphs rewards**? Please consider designating them to Hope Partners. That way you can help us feed the hungry by buying your own groceries! Simply visit www.ralphs.com. Once logged into your Ralphs account, you can search for INLAND VALLEY HOPE PARTNERS either by name or by our Non-Profit Organization number **WG044** and then click Enroll. New users will need to create an account which requires some basic information, a valid email address, and a rewards card.

Matching gifts is a form of corporate philanthropy which allows companies to match their employees' donations to nonprofits. Companies will match their employees' donations at a 1:1, 2:1, or even 3:1 ratio, effectively maximizing the impact of a single eligible donation. Your HR Dept. will typically be able to help you access your company's matching gifts program. Nordstrom, Macy's, Bank of America, ADP, The Home Depot, Starbucks, Verizon, H&R Block, and the Walt Disney Corporation are just a few employers with donation matching programs. Ask your employer about matching your gift TODAY!



March & April Donors

Pace Setters (\$250.00 to \$499.99)

(continued)

First United Methodist Church - Ontario
Susan Herndon - Signs by Susan
Peg and Jim Hill
Margaret Hover
Noreen Kistner
Ward & Lois McAfee
Christina Najarro
Richard & Elaine Newton
Mary Paine
Roger Richards
Dr. Loren Sanchez
Linda Shirbroun
Karima Y Tahir
Jess and Susan Villa
Ted & Wytske Visser
A. Christine Willis

Contributors (\$100.00 to \$249.99)

Judith Aboufares
Carol-Lee Marshall And Ben DeWald
Donald & Claire Ashman
Robert C Benza
Kevin & Sharonda Bishop
Margo Boss
Rick & Jenifer Braun
Kimberly Comer
Priscilla Constantine
Kristin Fossum and David Coons
Charles and Margaret Davis
Tad Dennis
Jean Denton
Robert & Carole Dyer
Marcia and James Ellison
Carol Fishburn

Artha Hooker
Paula Hui
Nadine and Steven Johnson
Roger Johnson
William Jones
George & Alice Kerner - Kerner Family Trust
Linda Liebing
Eric Malstrom
Mary Jean Neault and Mike Sutton
Timothy Nelson
Ted and Lowanna Owens - Owens5 Family
Pomona Fellowship Church of the Brethren
Ms M. Eileen Prendergast
Larry & Jeanine Robertson
Rock of the Foothills Lutheran Church
Andreas & Colleen Salomon
Eileen Senner
Leon Silberberger
George & Janice Spicer
John Stamp
James and Nancy Taylor
Thrivent Choice
Elise & Dave Tubbs
Janet K Vandevender
Jesse & Hope Vela
Margaret Velarde
Dwight Vogel

Explorers (\$50.00-\$99.99)

Eman Abohebeish
John & Mary Biddle
John Denham
Scott & Maria Duncan
Annamarie Espinosa
Kenneth Frank
Jim and Ann Frye
Good Shepherd Lutheran

Church
Patricia Hardy
John and Naomi Howland
Emily Lerner
Jennifer Locke
Barbara Lotz
Kaley McCluskey
Laura Mulroy and Sean Gallagher
Bette Nichka
Elisabeth Walker
Lois F Williams

Others (\$0.01- \$49.99)

Andres Aguirre
Marilyn Brunger
Charity Gift Certificates
Elizabeth Cowan Green - Hummingbird, LLC
Marilyn Eng
Leslie Ensz - Sempra Utilities
Magdalena Felix
Rose Ash and Glenn Goodwin
Betty & David Groendyke
Rose Heredia
Brenda Keith
Robert and Elaine Klitgaard
Barbara MacKenzie
Jim & Jeanne Miles
Glenda Pierron
Deborah Pruitt
Gloria Yard

In Memory Of

Mary Ball Williams
By: *Elisabeth Walker*

Mary V. Ball
By: *Elisabeth Walker*

Harry Brunger
By: *Marilyn Brunger*

Horace & Veronica Corigliano
By: *Bruce and Laura Corigliano*

Maxine Denham
By: *John Denham*

Glenda's Mother
By: *Glenda Pierron*

Patty Johnson
By: *Eric Malstrom*

Doug MacKenzie
By: *Barbara MacKenzie*

Daniel Morehouse
By: *Kimberly Comer*

Ole and Margo Olsen and Sharyn Maccharles
By: *Todd and Karen Logue*

Linda Vogel
By: *Dwight Vogel*

In Honor Of

Ebony Carrier
By: *Ted and Lowanna Owens*

Tim Constantine
By: *The Cheeryble Foundation*

Carolyn Loper
By: *Ellen Low Webster*



Planned gifts provide a meaningful way of making an impact on Hope Partners' future while maximizing your philanthropic and financial goals.

For more information on planned giving opportunities, give us a call at 909-622-3806.

GRACIAS

FRANTZ CLEANERS

622-2513 • 1490 N. GAREY

Same Day Service
ALL DRY-CLEANING DONE ON PREMISES
Alterations • Drapery Cleaning
Wedding Gown Specialist
10% DISCOUNT WITH COUPON



Geoff Hamill DRE #00997900
Broker Associate, CRS, SRS, GRI, SRES, GREEN
#1 Claremont Sales & Listings
Top 1% Realtors in the USA
Direct: 909.621.0500 • Geoff@GeoffHamill.com
GeoffHamill.com • WSSIR.com
Extraordinary Representation Since 1988



Wheeler Steffen

Sotheby's INTERNATIONAL REALTY



LET'S GROW YOUR BUSINESS

Place Your Ad Here
and Support Our Parish!

CONTACT ME
Stephanie Church

Schurch@4LPi.com
(800) 950-9952 x7880

DOES YOUR NONPROFIT ORGANIZATION NEED A NEWSLETTER?

OUR COMMUNITY NEWSLETTER
OCTOBER EDITION



Engaging, ad-supported print and digital newsletters to reach your community.



Scan to contact us!

Visit lpicomunities.com

NEW SMILE



TEETH-IN-A-DAY DENTAL IMPLANT CENTERS

COMPLETE NEW SET OF NEW TEETH IN A SINGLE VISIT

ALL-ON-4®

MINIMIZES SURGICAL COMPLEXITY

ZYGOMATIC IMPLANTS

A SECOND CHANCE AT GETTING PERMANENT TEETH

Scan for more information about Orabell and the science behind it



IF YOU LIVE ALONE

MDMedAlert!TM
At HOME and AWAY!

STARTING AT
\$19⁹⁵ /mo.

✓ Ambulance ✓ Police ✓ Family
"STAY SAFE in the HOME YOU LOVE!" ✓ GPS & Fall Alert
CALL NOW!



800.809.3570

md-medalert.com



MEMORY CARE AT THE RAUCH HOMES

FEELS LIKE HOME

Unique Home-like environment
Certification as a Montessori Inspired Lifestyle® Community
Low resident-to-staff ratio
Person-centered care

CALL TODAY
(909) 399-5504

Pilgrim Place,
625 Mayflower Rd,
Claremont, CA 91711
www.pilgrimplace.org

COAR 226, 225A 197607628, DSG495000084

PILGRIM PLACE

CONNECT WITH US

www.orabelldentalimplants.com
Van Nuys | West Covina
818 - 404 - 9389



For ad info. call 1-800-950-9952 • www.lpicommunities.com

Inland Valley Hope Partners, Pomona, CA

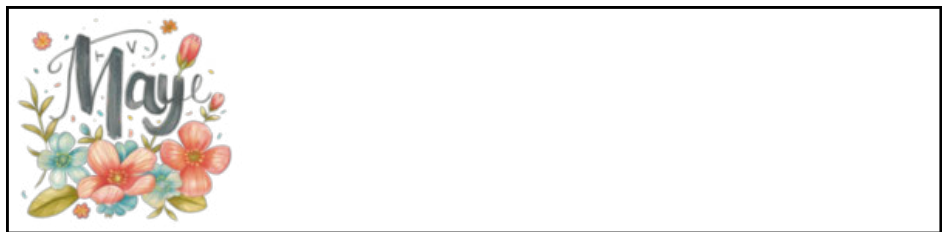
A 4C 05-1845



PO BOX 2572, Pomona, CA 91769-2572
Voice: 909.622.3806 * Fax: 909.622.0484
E-mail: info@InlandValleyHopePartners.org
Website: www.InlandValleyHopePartners.org

Return Service Requested

Non Profit Org.
U.S. Postage
PAID
Permit No. 134
San Dimas, CA
91773



Gift-In-Kind Donations for March & April

Admin/Our House

Alex Lomeli
Bank of America
Bonita High School NHS - Jacqueline Vasquez
Chris Webster
First Christian Church - Pomona
GFWC Federated East Valley
Woman's Club
Holy Name of Mary Church of School
Ron and Eliza Bolding
Ruby and Al Beilby
Sara Dave
Wynn Lucke

Beta

Claremont United Methodist Church
Good Shepherd Lutheran Church
Kathy Duramus
La Verne Church of the Brethren

Monte Vista Unitarian Universalist
Congregation
Pilgrim Place
Purpose Church
Temple Beth Israel
United Methodist Church La Verne

Claremont

City of Claremont
Pilgrim Place

San Dimas

Carolyn Gomm
Chris Schubert
Compassion Church of The Foothills
House of Joy
Judith Oschsner
Peace & Carrots Community Garden
San Dimas Senior Citizen Club
San Dimas United Methodist Church
YWCA/SGV

Sova

Andrew F. Tacazon
Ashley Tirona
BioBlockade
Coach's Oats
D & G Trucking
Donna Chadwick
Ericka
First United Church Upland
Kaiser Permanente Ontario Campus
Pomona Valley Hospital Medical
Center
Robert Larks
Superior Grocers
Torn & Glasser, Inc.
Upland United Methodist

Thank You!